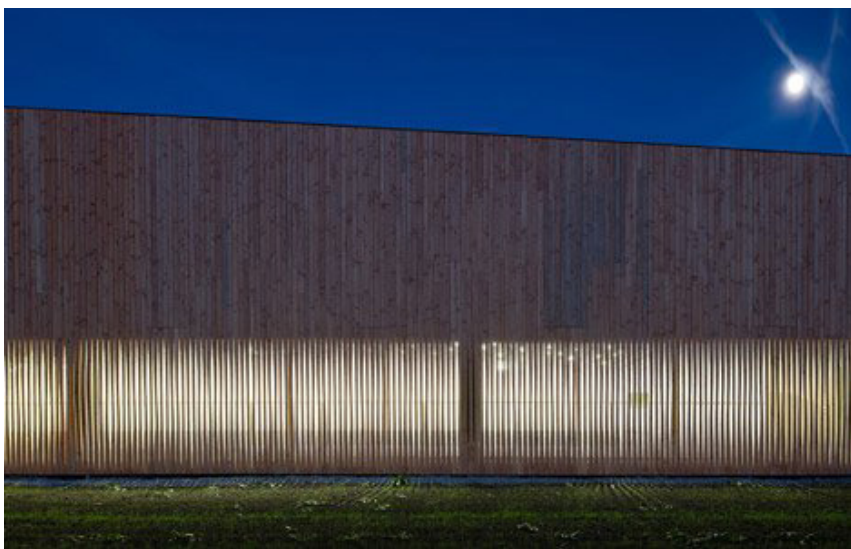


PRECEDENT STUDIES

What materials will the community centre use?

We use our knowledge of the best examples of similar schemes that have been recently completed to help inform our designs and help to describe our proposals to you. We're not saying that the Magor and Undy Hub will look like any one of these schemes, but they all have something to offer.



**EXTERNALS**  
*Look & Feel*



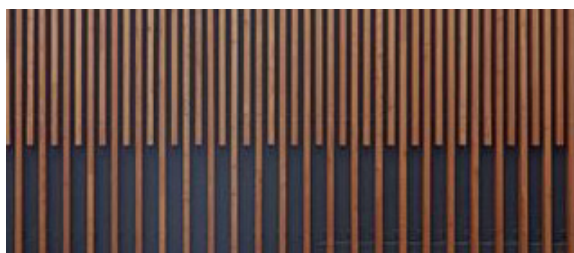
**INTERNALS**  
*Look & Feel (Hall)*



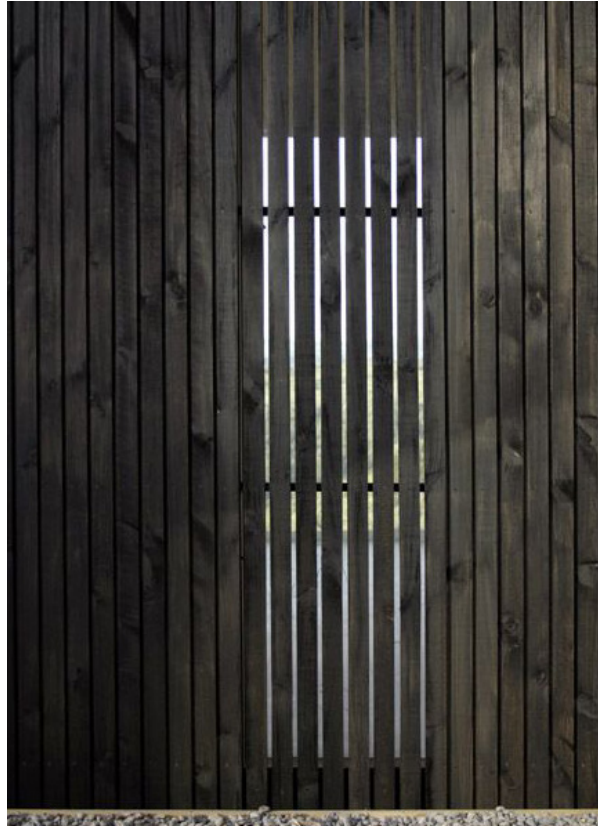
**INTERNALS**  
*Look & Feel (Cafe & Foyer)*



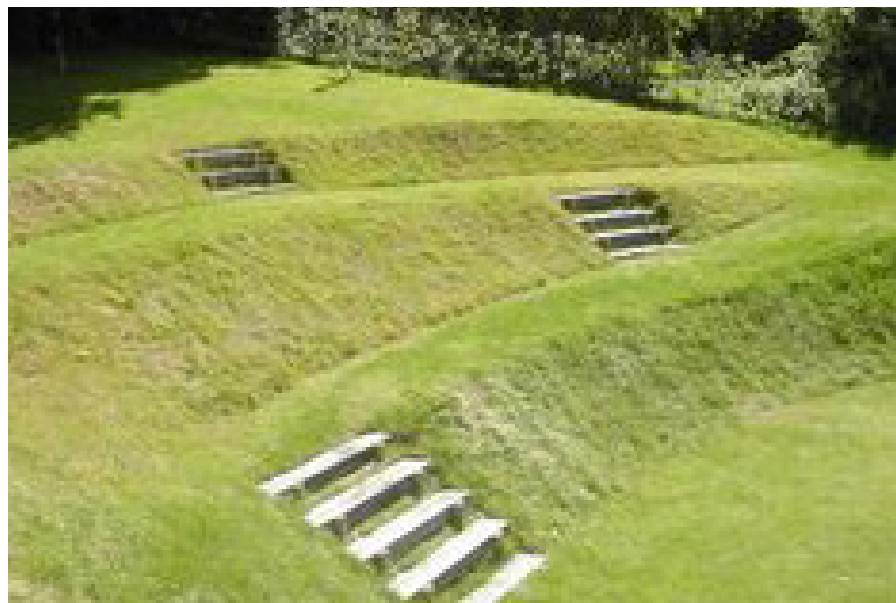
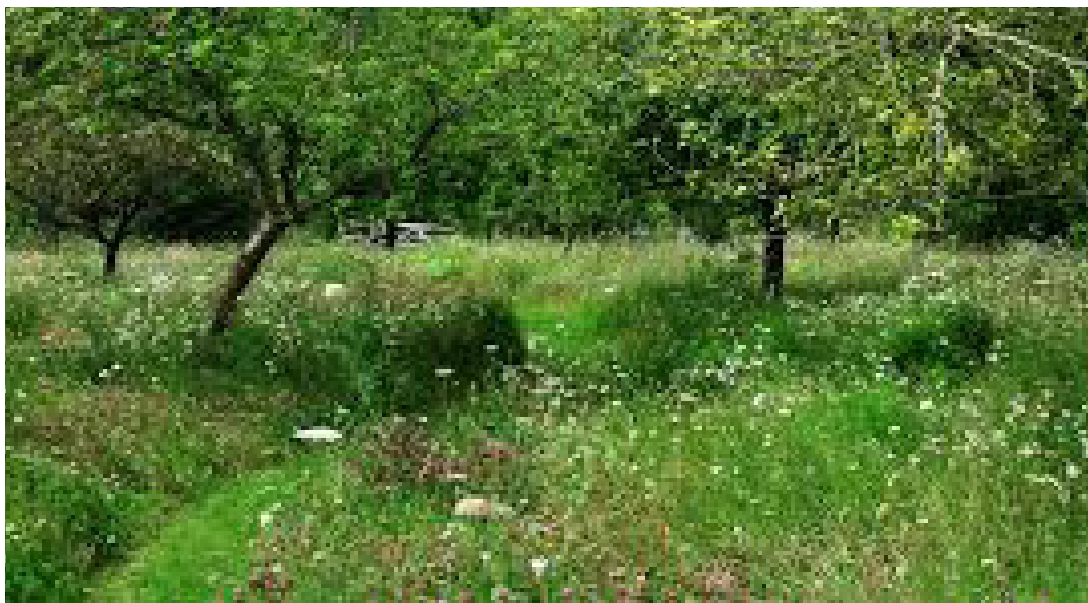
**MATERIALITY DETAIL**  
*Zinc roof with timber cladding*



**MATERIALITY DETAIL**  
*Timber cladding options*



**MATERIALITY**  
*Brick plinth (top)  
Timber shutters*



**PROPOSED LANDSCAPING**  
*Look & Feel*